

## High THC-A Flower

Sample 614-011823-012

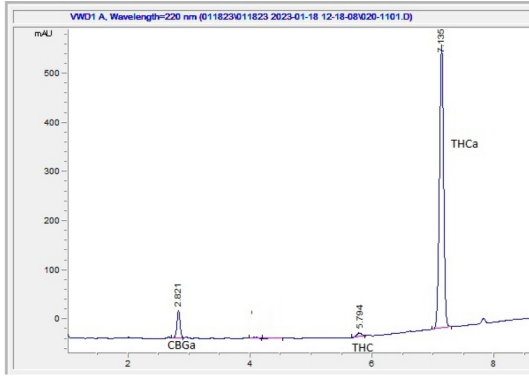
Indoor Kush Mintz THCa Hemp Flower

Sample Submitted: 01-18-2023; Report Date: 01-18-2023

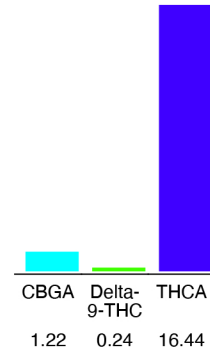
## Indoor Kush Mintz THCa Hemp Flower

Plant Material: Flower

### Chromatogram



### Cannabinoid Profile



### Cannabinoid Profile by HPLC

**0.24%**

Delta-9-THC

**0.00%**

CBD

**17.90%**

Total Cannabinoids

Cannabinoid	% wt	mg/g
CBGA	1.22	12.2
Delta-9-THC	0.24	2.4
THCA	16.44	164.4
<b>Total Cannabinoids</b>	<b>17.90</b>	<b>179.0</b>
<b>Calculated CBD Yield</b>	<b>0.00</b>	<b>0.00</b>

Calculated Maximum CBD Yield = CBD + 0.877 \* CBDA

**Marin Analytics, LLC**  
250 Bel Marin Keys Blvd, Suite D4  
Novato, CA 94949

415-936-6477 / sarabiancalana1@gmail.com

*Sara Biancalana*

**Sara Biancalana**  
Chief Scientist